



AIRPHO

Features

- Supports superfast wireless speeds of up to 1200Mbps with the next-generation AC Wi-Fi connection.
- Supports 2.4GHz and 5GHz bands simultaneously, providing fast and stable connections for more devices.
- Excellent VDSL2/ ADSL2+ high speed modem router, providing up to 100Mbps broadband speeds.
- Easy one-touch wireless security encryption with the WPS button.
- Provides USB port for storage sharing, printer sharing, 3G modem sharing, FTP server and media server.
- Easy Setup Assistant provides quick & hassle free installation.



AR-V400

AC1200 Wireless VDSL/ADSL
Modem Router

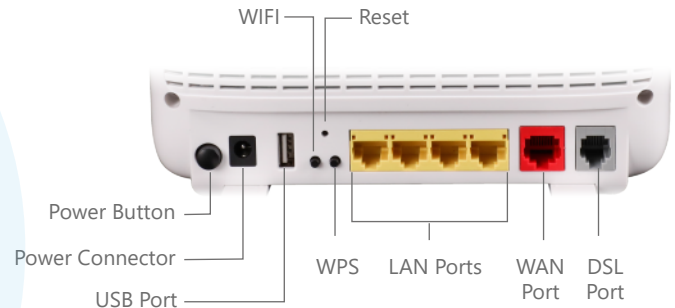
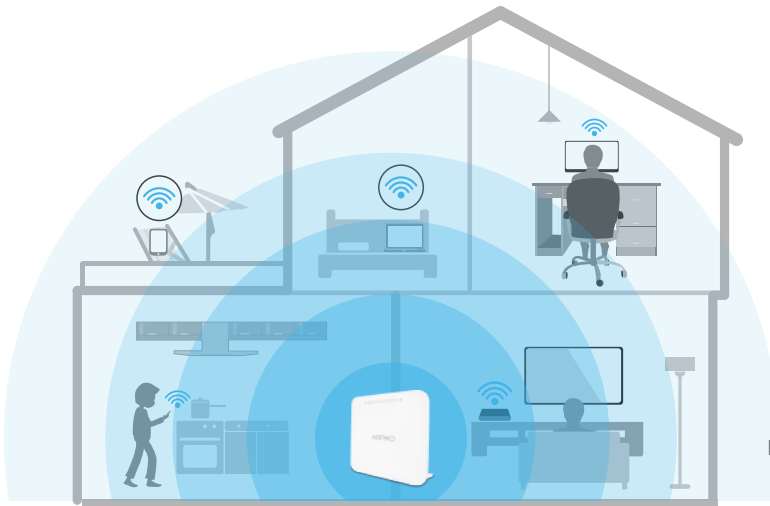


Description

The AR-V400 VDSL Router comes with the latest ITU-T G.993.2 VDSL2 standard, providing up to 100Mbps speed downstream and upstream. It comes with the latest Wi-Fi standard - 802.11ac, providing superfast wireless speeds of up to 1200Mbps, with transfer rates 3 times faster than wireless N speeds.

With the selectable dual bands, users effectively avoid network interference by choosing 2.4GHz band for normal network use such as web surfing, and the other non-overlapping 5GHz band for lag-free HD video streaming and online gaming. It is an ideal choice for users of heavy bandwidth consuming or interruption sensitive applications.

What's more, this device allows for two different connection types VDSL/ADSL and Ethernet WAN, giving users the flexibility to access the Internet whichever method is most convenient. With its multi-function USB port, users can share printers, 3G Modem, and play media across the local network or access files from attached USB storage across the internet by adopting FTP server function.



Specifications

General	
DSL Standards	VDSL2, ADSL2/2+, ADSL
Wireless Standards	IEEE802.11a/n/ac,5GHz , IEEE802.11b/g/n,2.4GHz
Signal Rate	5GHz:Up to 867Mbps, 2.4GHz:Up to 300Mbps
Operation Frequency	2.4GHz and 5GHz
Receive Sensitivity	5GHz 11a 6Mbps : -96dBm, 11a 54Mbps: -79dBm 11ac HT20: -71dBm, 11ac HT40: -66dBm, 11ac HT80: -63dBm, 11n HT20: -72dBm, 11n HT40: -71dBm 2.4GHz 11g 54M: -77dBm 11n HT20: -74dBm, 11n HT40: -72dBm
Wireless Security	WEP, WPA / WPA2, WPA-PSK/ WPA2-PSK encryption
Hardware	
Interfaces	1 x DSL Port, 1 x 10/100/1000Mbps WAN Port 4 x 10/100/1000Mbps LAN Ports, 1 x USB2.0 ports
Buttons	Power ON/OFF Button, WPS Button, WiFi Button, Reset Button
Power Supply	DC 12V 1.5A
Antenna	4 x 5dBi dual band fixed antennas
Dimensions (W X D X H)	185mm x 150mm x 28mm

Software Features			
WAN Type	ATM/PTM/ETH/Dongle		
DHCP	Server, Client, DHCP Client List, Address Reservation		
Quality of Service	WMM, Bandwidth Control		
Port Forwarding	Virtual Server, Port Triggering, UPnP, DMZ		
VPN Pass-Through	PPTP, L2TP, IPSec		
Access Control	Parental Control, Local Management Control, Host List, Access Schedule, Rule Management		
Firewall Security	DoS, SPI Firewall IP Address Filter/MAC Address Filter/Domain Filter IP and MAC Address Binding		
USB Sharing	Support Samba(Storage)/FTP Server/Media, Server/Printer Server/DLNA		
Management	Access Control, Local Management, Remote Management		
Internet Protocol	IPv4, IPv6		
Environment			
Operating Temperature	0°C~40°C (32°F~104°F)		
Storage Temperature	-40°C~70°C (-40°F~158°F)		
Relative Humidity	10%~90%, non-condensing		
Storage Humidity	5%~95%, non-condensing		
Certifications	CE, RoHS		
Package Contents			
Package Contents	1 x VDSL Router 1 x Ethernet Cable	1 x Quick Installation Guide 2 x Telephone Line	1 x Power Adapter 1 x VDSL Splitter