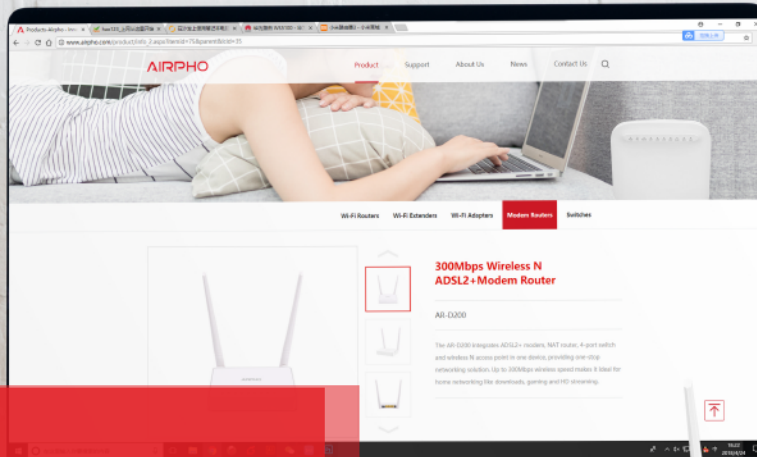


AIRPHO



Features

- Supports wireless speeds of up to 300Mbps, which is perfect for website browsing and online video streaming.
- Supports downstream speeds of up to 24Mbps.
- Supports Wi-Fi Protected Setup (WPS).
- Easy Setup Assistant provides quick & hassle free installation.
- Provides 64/128-bit WEP encryption security and wireless LAN ACL (Access Control List).

AR-D200

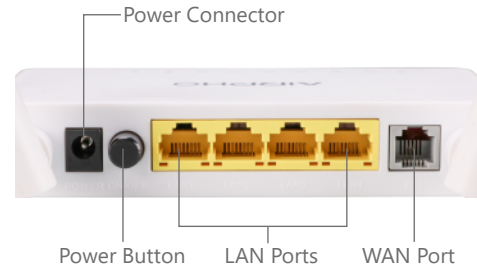
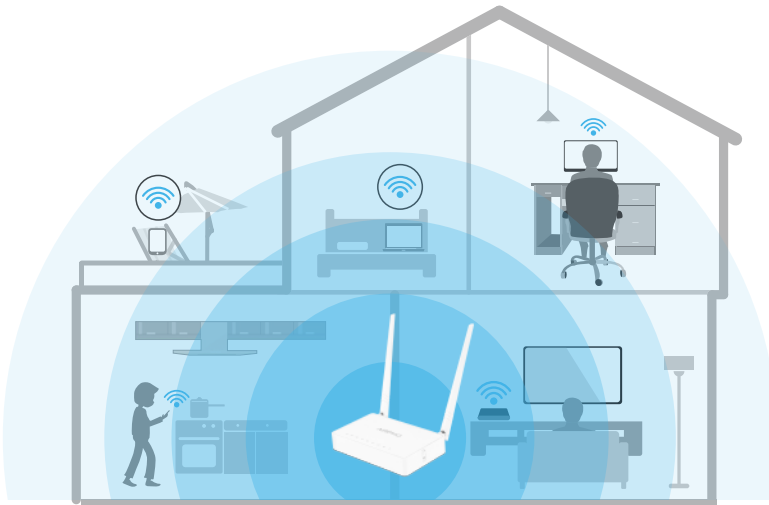
300Mbps Wireless N
ADSL2+ Modem Router



Description

The AR-D200 is an All-in-One solution that integrates the functions of a high speed DSL modem and a 4-port 10/100Mbps NAT wireless router. By supporting the latest ADSL standards, the modem router delivers much faster speed than a dial-up connection without tying up the phone lines. Now you can enjoy more kinds of bandwidth

consuming applications like HD video streaming and online gaming wirelessly from anywhere in your house or even in the yard. Meanwhile, the AR-D200 provides strong protection against online security threats, which can guarantee the security of data transmission of home or corporate network.



Specifications

General	
IEEE Standards	IEEE 802.3, 802.3u, 802.11n, 802.11g, 802.11b
ADSL Standards	Full-rate ANSI T1.413 Issue 2, ITU-T G.992.1(G.DMT), ITU-T G.992.2(G.Lite), ITU-T G.994.1(G.hs)
ADSL2 Standards	ITU-T G.992.3 (G.dmt.bis), ITU-T G.992.4 (G.lite.bis)
ADSL2+ Standards	ITU-T G.992.5
DATA RATES	Downstream: Up to 24Mbps Upstream: Up to 3.5Mbps (with Annex M enabled)
ATM / PPP Protocols	ATM Forum UNI3.1/4.0 PVC (up to 8 PVCs) ATM Adaptation Layer Type 5 (AAL5) Traffic Shaping (ATM QoS) UBR, CBR, VBR-rt, VBR-nrt Bridged and routed Ethernet encapsulation VC and LLC based multiplexing PPP over Ethernet (RFC2516) PPP over ATM (RFC 2364) IPoA (RFC1577/2225)
Main Features	Bandwidth Control Dynamic Host Configuration Protocol (DHCP), DHCP relay Network Address Translation (NAT) Static Routing, RIP v1/v2 VPN(PPTP, L2TP, IPSec) Pass-through PVC/Ethernet Port Grouping DNS Relay, DDNS IGMP Multicast, IGMP snooping V1/2 Virtual server, DMZ, ACL(Access Control List) UPnP
Management	Web Based Configuration, Remote management, Telnet management, Command Line Interface(CLI), SSL for TR-069, SNMP v1/2c, SNMP over EOC, Web Based Firmware Upgrade, CWMP(TR-069), Diagnostic Tools

Security	NAT and SPI Firewall MAC / IP / Packet / URL Filtering		
Operation Frequency	2.4GHz		
Wireless Speed	11N: Up to 300Mbps		
Wireless Security	Provides 64/128-bit WEP encryption security, WPA-PSK/WPA2-PSK authentication and TKIP/AES encryption security		
Hardware			
Interface	1 x RJ11 DSL Port, 4 x RJ45 LAN Port		
LED Indicators	Power,DSL,Intelnet,WLAN,WPS,LAN1-LAN4		
Buttons	Power ON/OFF Button, WPS/WiFi Button, Reset Button		
Power Supply	DC 12V 0.5A		
Antenna	2 x Fixed Omni-directional Antenna		
Dimensions (W x D x H)	132mm x 94mm x 27mm		
Environment			
Operating Temperature	0°C~40°C (32°F~104°F)		
Storage Temperature	-40°C~70°C (-40°F~158°F)		
Relative Humidity	10%~90%, non-condensing		
Storage Humidity	5%~95%, non-condensing		
Certifications	CE, RoHS		
Package Contents			
Package Contents	1 x Wireless Modem Router 1 x Ethernet Cable	1 x Quick Installation Guide 1 x Telephone Line	1 x Power Adapter 1 x ADSL Splitter